



# FLOOD RESPONSE Report

CALAMITY AFFECTED DISTRICTS

# HUMANITARIAN ASSISTANCE 2022





# FLOOD REPOSENSE REPORT



## IN NUMBERS

# 1,506,771

Families Surveyed as per  
Assessment affected

# 982,209

Families Constructed  
Houses Partially and Fully  
damaged as per  
Assessment

# 406,928

Livestock Death

# 682

Human Casualties'

# 1,108,264

Migrated Households

# Flood Response

**11,287**

Dry Ration Bags

**123,822**

Livestock Vaccinated

**9,241**

Stitched Clothes

**841**

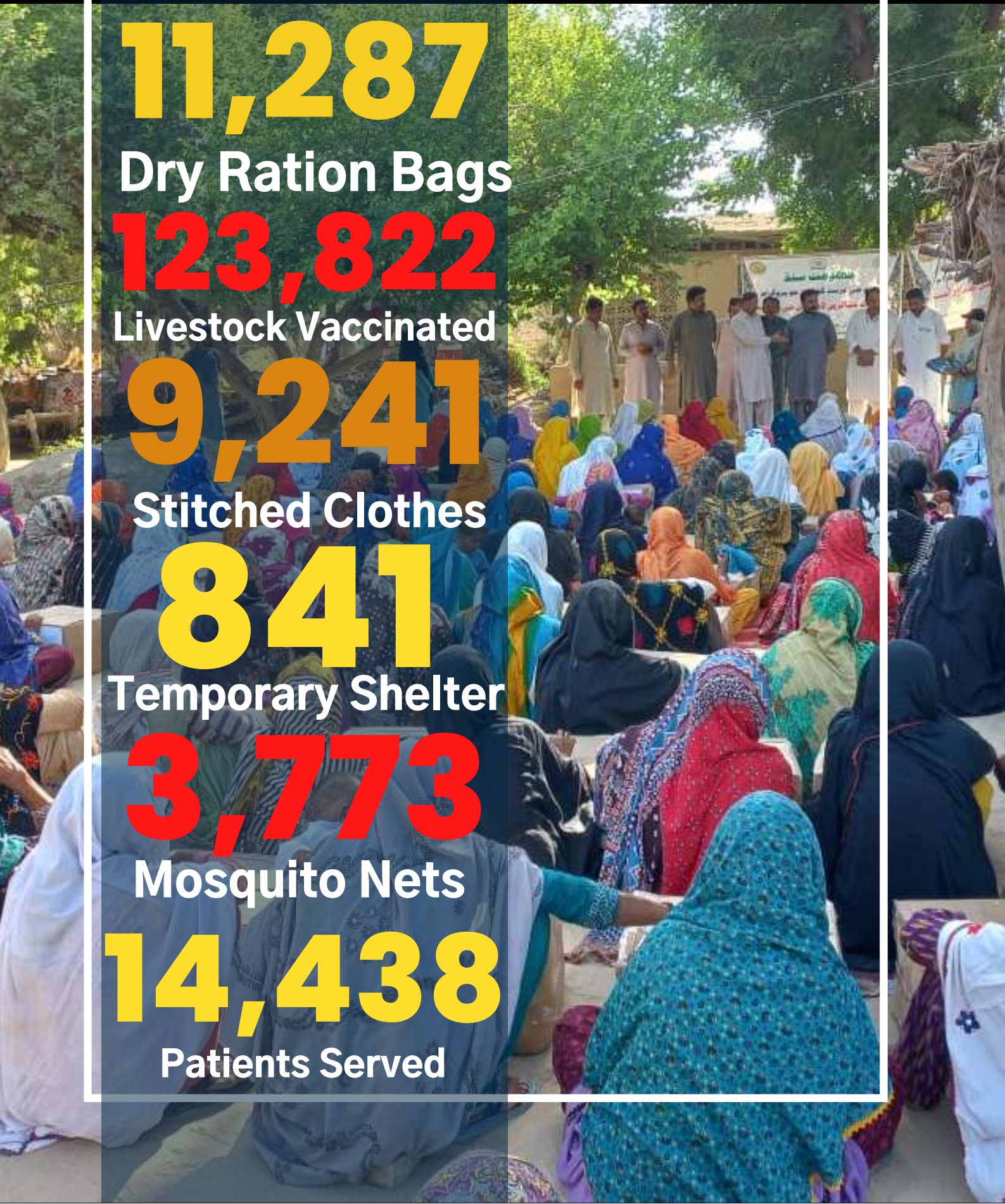
Temporary Shelter

**3,773**

Mosquito Nets

**14,438**

Patients Served





**VO Deedar Shah Tehsil Pithoro Umerkot**



**VO Deedar Shah Tehsil Pithoro**

Program(PPRP)

india



**VO Mumtaz Shah Pithoro**

uction Program(PPRP)

(±11m)



**VO Anchlo Kolhi Tehsil Pithoro Umerkot**

ogram(PPRP)

h



**VO Sahar Roonjho Tehsil pithoro**

Program(PPRP)

m)



**VO Talib Al Mola Pithoro**

ction Program(PPRP)



**VO Parkar Tehsil Kunri**

Program(PPRP)



District Khairpur, Tehsil KotDiji



District Khairpur, Tehsil Thari Mirwah



District Khairpur, Tehsil Faiz Ganj

# SRSO STAFF

Relief Work in challenging Time



22.09.15 11:26

# Jhuddo Taluka Mirprukhas Current Situation



Roads



Government school Under Water



Mobile Company Tower



Local Market Shops



Agri Land Under Water









**Mirch Mandi Jhuddo**



**Roads**



**Jhuddo Main Road**





## Tents/Dry Ration Bags & Hygiene kit Distribution

---



SRSO-District Mirpurkhas team facilitated Tayaba Welfare International Association and distributed 70 ration bags, and 70 Hygiene Kits to rain-affected families and homeless peoples-(IDPs) living under the open sky on the roads, where a tent city was established in which 31 families were given the facility to stay and live in tents, financed by Tayaba Welfare International Association.

This all follows by a systematic method. Team conducted need base initial rapid assessment in affected areas for provision of assistance.

Team conducted need base rapid assessment door to door at individual/HH level in 45 villages of different talukas and IDPs sitting on the road side and collected data regarding losses and damages of households.









# PAKISTAN: 2022 Monsoon Floods

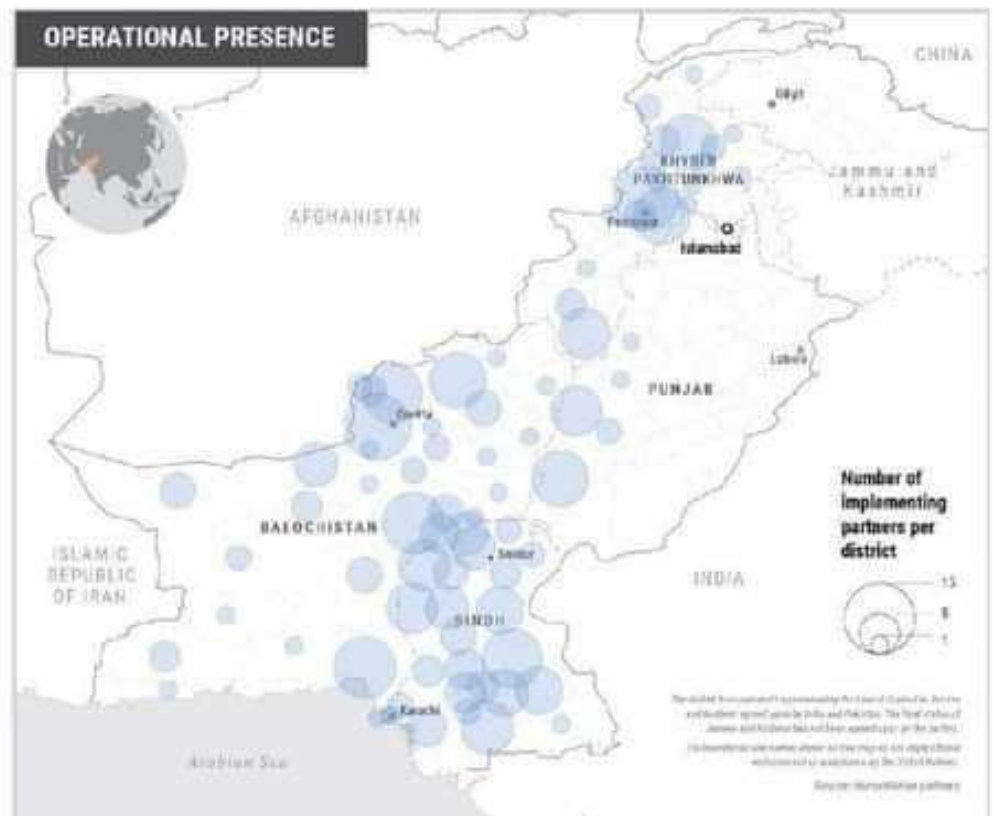
## Situation Update No. 5

As of 9 September 2022

This report is produced by the OCHA Humanitarian Advisory Team (HAT) in Pakistan in collaboration with humanitarian partners. It covers the period from 3-9 September 2022. The next report will be issued on or around 16 September 2022.

### HIGHLIGHTS

- Over 1.5 million houses in Sindh damaged or destroyed – nearly 88 per cent of the total nationwide.
- Education and learning interrupted for an estimated 3.5 million children, including in at least 61 refugee schools.
- Nearly 800,000 refugees live in districts officially notified as 'calamity hit', over a quarter in Peshawar district in Khyber Pakhtunkhwa.
- Over 1.2 million hectares of agricultural land has reportedly been damaged in Sindh alone.
- Multisector rapid needs assessments are rolling out in Sindh, Khyber Pakhtunkhwa, and Punjab.



**556K**  
houses  
destroyed

**1.17M**  
houses  
damaged

**6.7K**  
kilometres of  
roads damaged

**1.4K**  
people  
killed

**12.7K**  
people  
injured

**755K**  
livestock  
lost

# SINDH'S DEVASTATION STATISTICS



PAKISTAN

2022 Monsoon Floods Humanitarian Response Snapshot

As of 13 September 2022

## OVERVIEW

Heavy rains and flooding swept many parts of the country this monsoon season. Sindh has been the most affected of all provinces. Notably, nearly 80 per cent of all damaged or destroyed houses – nearly 1.54 million houses – are in Sindh, and the province has also recorded the highest number of human casualties.

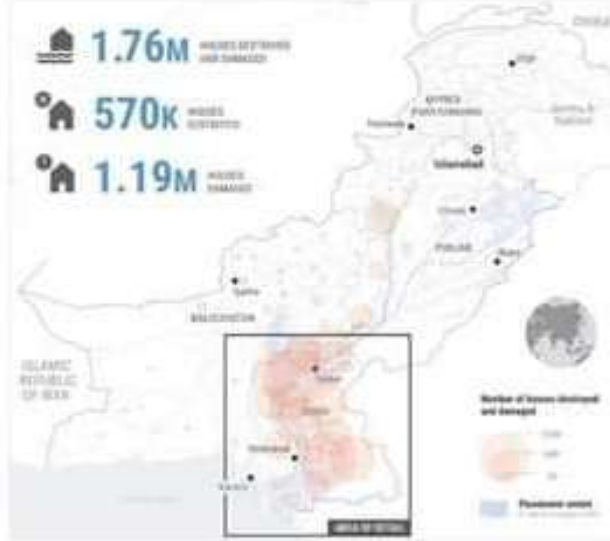
**33M** PEOPLE AFFECTED  
**1.5k** PEOPLE KILLED  
**12.7k** PEOPLE INJURED

**541k** PEOPLE IN RELIEF CAMPS

**179k** PEOPLE RETURNED

**81** DISTRICTS DECLARED SALAMTY HIT

## FLOOD EXTENT AND DAMAGES

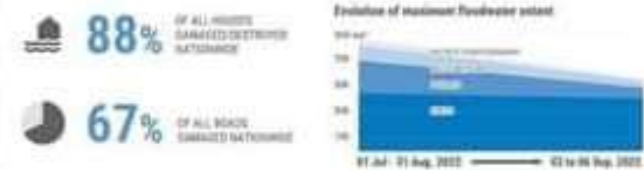
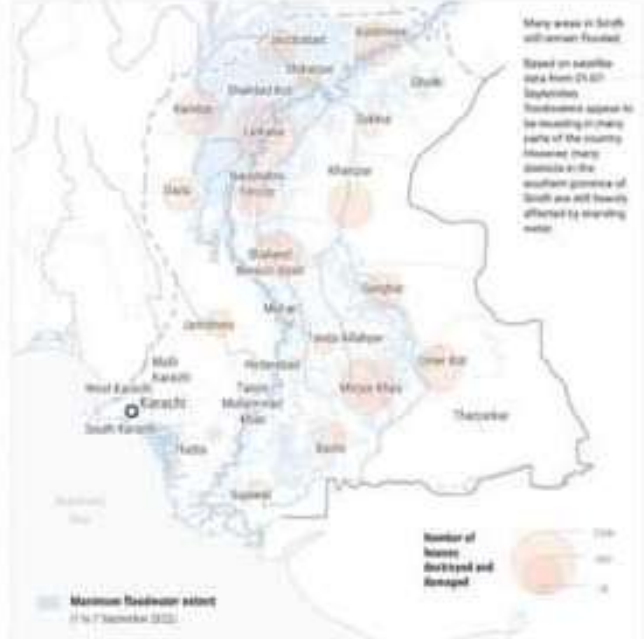


**390** HOUSES DAMAGED

**12.4k** KM<sup>2</sup> OF BEACHES DAMAGED

**908k** LIVESTOCK KILLED

## SINDH PROVINCE



Due to Heavy Rain and Flood 88% of Houses have been fully damage in Sindh which is one million, five hundred forty thousand and highest human casualties also occurred in Sindh

**2X** more gender-based violence and child protection concerns now, as compared to the pre-monsoon period. Physical and sexual violence against women increases post-disaster and is largely under-reported. (OCHA Situation Report, 2022 & Center of Disaster Philanthropy).

Women in relief camps are unable to exercise usual sanitation activities due to a lack of privacy and security from male survivors, risking diseases and endangering menstrual health.

(Dawn News, 2022).



“There is no place for showering or going to the bathroom,” said Zebunnisa Bibi, forced to flee with her family two weeks ago when floodwater inundated her village.

## Summary of the Crop losses Sindh

Crops	Total Acreage	Damage Acres	%age Damage	Average Market price/ Mds-Rs	Production loss (Ton)	Financial Losses (Rs. Million)
Cotton	1,467,579	1,467,579	100%	7000/=	1,174,063.20	205,461.06
Date Palm	101,379	101,379	100%	1,000/=	70.00	7,096.53
Sugarcane	225,101	45,207	20%	250/=	13,562.10	3,390.53
Kharif Chillies	55,167	29,622	53%	8,200/=	947.90	7,772.81
Onion	83,873	42,268	50%	2,000/=	5,072.16	10,144.32
Tomato	20,167	12,101	60%	3,200/=	847.07	2,710.62
Kharif Vegetable	63,592	30,718	49%	2,000/=	1,228.72	2,457.44
Rice	1,487,900	1,038,174	70%	1,400/=	36,336.09	50,870.53
Sesame	8,958	7,234	80%	9,300/=	36.17	336.38
Others	149,913	70,764	51%	2,000/=	3,538.20	7,076.40
<b>Total</b>						<b>297316.61/=</b>

*Data updated on 25-08-2022*

SINDH: River Indus after receiving water from 4 rivers, causes floods in the Sindh Province. The upper regions of the Sindh Province constitute the Districts of Kashmore, Shikarpur and Larkana on the right bank of River Indus and Ghotki, Sukkur, Khairpur, Naushahro Feroze and Shaheed Benazirabad on the left bank of River Indus. These Districts on the right and left of River Indus face a severe threat owing to passage of River Indus. The districts in the lower Sindh, prone to Riverine flooding include Dadu and Jamshoro on the right bank of River Indus and Matiari, Hyderabad, Thatta and Tando Muhammad Khan on the left bank.

After human losses in Sindh province there is a loss of 2,845,046 acres of cropped area. The details of losses as on 25-08-2022 are as follows.

1 Cotton: The total area cultivated of the cotton was 1,467,579 acres which is completely damaged by the flooding/ monsoon rain. The loss in monetary terms on current nominal prices is about 205,461.06 Million rupees. Remarks: Complete damage of the Cotton Crop

2 Date Palm: The total acreage damage is 101,379 which is 100 damage of the total area cultivated. The loss is equivalent to amount of 7,096.53 Million Rupees. Remarks: Complete damage of the Cotton Crop

3 Sugarcane: The total damage area is about 45,207 acres which is about 7.18% of the total area cultivated. The loss in financial term is about 3,390.525 million rupees.

4 Kharif chillies: The total area damage is about 29,622 acres which is about 53% of the total area cultivated of the crop. The amount of Rs.7772.812 is lost due to crop damage. Remarks: about half of the cultivated crop is damaged.

5 Onion: The total acreage damage is about 42,268 which about 27.95% of the total area cultivated. The financial loss is about 10,144.32 million rupees due to onion crop damage. Remarks: Partially damaged.

6 Tomato: 12,101 acres of Tomato crop has been damaged due to heavy rain/flooding. The area damage is about 60% of the total cultivated area. The financial loss is about 2,710.624 million rupees.

Remarks: Partially damaged

7 Kharif Vegetables: 30,718 acres of the kharif vegetables have been damaged. The area is about 55% of the total area cultivated for the crop. The financial loss is about 2457.44 million rupees. Remarks: Half of the crop is damaged

8 Rice: The total damage area is about 1,038,174 which is about 70 % of the area cultivated for Rice. The financial losses due to crop damage is about 50,870.526 million rupees. Remarks: About 70% of the crop is damaged

9 Sesame: The area damaged is about 7,234 acres which is about 80% of the total area cultivated (8,958) for sesame. The loss in financial term is about 336.381 million rupees. Remarks: Partially damaged.

10 Others: 70,764 acres have been damaged. The amount of financial loss is about 7076.4 million rupees. The total area for the other (than reported earlier) is about 149,913 acres.

**Data Source: FAO**



# Population Living in Vulnerable COnditions in Sindh

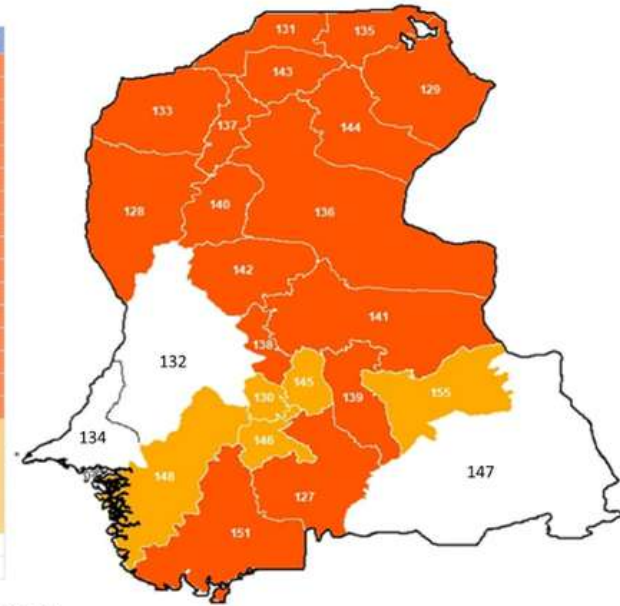
## 700,000

women in severely affected districts expressed a desire to space or limit their children but remain unserved

## 1,300,000

women in severely affected districts bear 5 or more children

Code	District	# of Women with Unmet Need
129	Ghotki	65,946
143	Shikarpur	59,790
136	Khairpur	59,681
139	Mirpur Khas	57,027
140	Naushahro Feroze	54,862
141	Sanghar	52,735
127	Badin	50,517
128	Dadu	47,391
142	Sh. Benazirabad	47,090
133	Kambar Shahdad Kot	43,774
144	Sukkur	37,547
151	Sujawal	36,973
135	Kashmore	36,203
138	Matiari	32,031
137	Larkana	30,632
131	Jacobabad	29,412
155	Umer Kot	57,707
148	Thatta	37,473
146	Tando M. Khan	34,446
145	Tando Allahyar	26,589
130	Hyderabad	12,147
147	Tharparkar	115,102
132	Jamshoro	28,154



- Severely Affected Districts
- Moderately Affected Districts
- Minor or Unaffected Districts

0 15 30 60 90 120 Kilometers



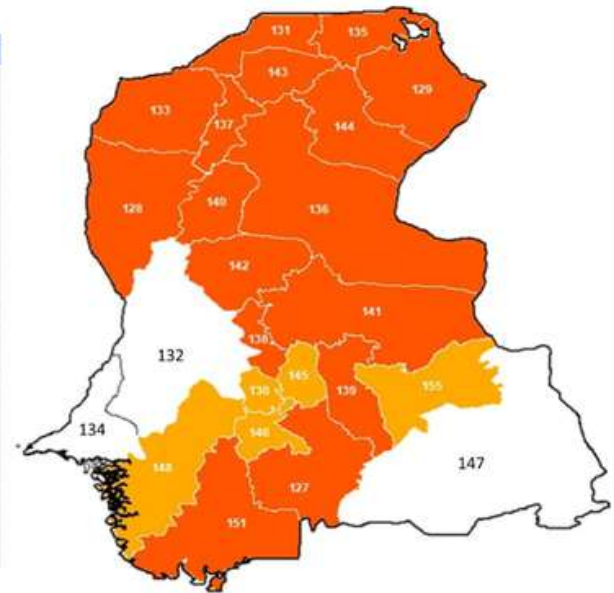
**Source:** The Population estimates for those affected by population are projected for 2021 from the Population & Housing Census 2017. Family planning and fertility are drawn from the Sindh MICS 2018-19. The georeferenced map used to classify the affected population is based on satellite imagery and spatial data released by UNOSAT.

Displaced population in severely affected districts lived in

## 2,300,000

**Kacha Structures,** most likely damaged or destroyed

Code	District	Number of Kacha Houses
127	Badin	295,062
147	Tharparkar	279,892
141	Sanghar	205,223
136	Khairpur	202,345
139	Mirpur Khas	177,002
155	Umer Kot	165,309
142	Sh. Benazirabad	143,711
128	Dadu	142,262
151	Sujawal	137,732
148	Thatta	130,084
143	Shikarpur	126,424
129	Ghotki	121,365
133	Kambar Shahdad Kot	117,967
137	Larkana	115,380
135	Kashmore	114,254
140	Naushahro Feroze	112,492
131	Jacobabad	108,233
144	Sukkur	93,090
145	Tando Allahyar	89,538
146	Tando M. Khan	86,422
132	Jamshoro	62,430
138	Matiari	58,441
130	Hyderabad	47,727



- Severely Affected Districts
- Moderately Affected Districts
- Minor or Unaffected Districts

0 15 30 60 90 120 Kilometers



**Source:** The Population estimates for those affected by population are projected for 2021 from the Population & Housing Census 2017. Housing data was also drawn from 2017 census. The georeferenced map used to classify the affected population is based on satellite imagery and spatial data released by UNOSAT.

### Flood Maps with Disaggregated Population Data Analysis of Sindh

16 Districts are **Severely Affected**  
5 Districts are **Moderately Affected**



District	Population	# of Pregnant Women	Population < 5	Population 65+
Shikarpur	2,543,180	42,941	424,176	78,075
Sanghar	2,251,007	41,800	396,450	67,761
Badin	2,009,583	42,748	321,182	62,514
Ghotki	1,846,315	48,906	302,181	51,229
Naushahro Feroze	1,752,608	30,560	282,048	52,448
Sh. Benazirabad	1,749,289	29,695	264,334	51,529
Dadu	1,685,469	32,399	290,180	51,674
Larkana	1,663,102	20,869	241,919	47,367
Sukkur	1,644,148	32,777	230,505	41,885
Mirpur Khas	1,638,237	28,407	248,921	50,529
Kambar Shahdad Kot	1,447,139	27,754	237,849	44,214
Shikarpur	1,325,137	21,714	221,118	35,138
Kashmore	1,206,405	30,901	222,032	31,342
Jacobabad	1,078,730	21,268	185,754	30,211
Sujawal	851,067	21,194	132,958	28,793
Matiari	684,273	16,238	120,876	24,914
Hyderabad	2,387,525	17,734	295,054	57,607
Umer Kot	1,188,742	17,030	203,136	37,305
Thatta	1,091,089	18,040	164,533	36,725
Tando Allahyar	898,404	13,414	141,899	26,228
Tando M. Khan	742,043	8,949	117,007	23,285
Karachi	17,895,524	283,180	2,009,439	618,895
Tharparkar	1,867,456	35,888	368,060	63,399
Jamshoro	1,113,925	18,269	156,932	33,956

Displaced population in severely affected districts lived in **2,300,000** Kacha Structures, most likely damaged or destroyed

District	Number of Kacha Houses
Badin	295,062
Sanghar	205,223
Khairpur	202,345
Mirpur Khas	177,002
Sh. Benazirabad	143,711
Dadu	142,262
Sujawal	137,732
Shikarpur	126,424
Ghotki	121,365
Kambar Shahdad Kot	117,967
Larkana	115,380
Kashmore	114,254
Naushahro Feroze	112,492
Jacobabad	108,233
Sukkur	93,090
Matiari	58,441
Umer Kot	165,309
Thatta	130,084
Tando Allahyar	89,538
Tando M. Khan	86,422
Hyderabad	47,727
Tharparkar	279,892
Jamshoro	62,430

## Data Source: Population Council

4,000,000 are Children < 5 Years  
Who require immunization and nutrition care



700,000 are Aged 65+  
Who require special care



500,000 Women are Currently Pregnant  
Who require antenatal, delivery and post-natal services



# RAPID NEED ASSESSMENT

## Rapid Need Assessment-Results

Theme/Area	Situation	Need
Dewatering	The current situation is worst because mostly 30% to 40% Villages are submerged into water and surrounding water is standing everywhere in their villages.	There is dire need of dewatering from their villages and houses and need to initiate the dewatering to return their homes.
Shelter	In the Eight assessed districts, the total affected HHs are 1,109,516; out of which 610,819 are partially damaged and 133,140 are fully damaged.	1- Tents, Tarpaulin Sheets 2- Shelter kits & reconstruction materials 3- Rehabilitation and reconstruction of Houses/rooms 4- Cash for work as a preferred modality for rehab/reconstruction. 5- Coarse and thick large prices of cloths to create area of privacy for women
	Exposure to open-atmosphere and mosquito production increased due to water-logging	Mosquito nets and Mosquito repellents
	Animals shades are mostly damaged, being more fragile and will be exposed to harsh weather.	1-Provision of Animals shades are mostly damaged, being more fragile and will be exposed to harsh weather of winter, 2-On small scales, animals shades can be provided as support
	Due to Mosquitos and no fodder for livestock, the death rate is increased day by day.	
WASH ( Water)	Water sources are damaged either partially or fully in most affected areas . In Deserted areas open Wells are damaged and DWSS on Tube-Wells are mostly damaged. The major issues with DWSS is recorded as damages of pipelines. Availability of drinking water has been a significant problem.	Provision of water-supply through water-tanks in areas with high demand and need for water . 2-Rehab of Communal based DWSS through provision of pipelines or other minor issues if occurs.
Sanitation	Pit latrines/Community straw huts made latrines are inundated, the structures are perished and septic areas filled with mud/rain water. It is also a critical protection issue for women and PWDs.	Provision of pit latrines at relief camps or at houses and if there are funds of materials for latrines construction
Hygiene	Personal hygiene has been a substantial issue	1- Hygiene awareness sessions 2- Provision of hygiene kits 3- Distribution of dignity/MHM kits for adult girls and women
Food and Livelihood	Agri-crops and vegetables are completely inundated Horticulture is substantially damaged Savings of low-income and daily wages dependent HHs is lost Labor and daily wage earners are affected	Unconditional and conditional ( Cash for Work) cash distribution in vulnerable families, 2- Provision of food packages ( Dry Ration Bags and Cooked Food) and nutrition for highly vulnerable families, pregnant/lactating mothers and the neonates and babies 3- Distribution Seasonal agri-seeds for promoting home garden ( KG) for promoting improved nutrition.
	Food stocks are badly affected Accessibility issues have increased Kitchens got damaged	Provision of food items ( Dry Ration Bags ) on large scale and immediate basis and Provision of kitchen utensils (sets).
	Small enterprises are reportedly damaged as evident in assessment findings	Business Development Groups and People need small unconditional Cash grant for revitalization of their business.
	Outbreak of diseases in animals caused their deaths	1- Carpet vaccination of livestock, 2- Coordination with livestock department and diagnosis, medication in target areas
Coordination	Coordination needs to be strengthened more with response and humanitarian organization by onboarding the local district administration for more relief work to approach all the affectee.	The SRSO Team and District Managers must establish a well-coordinated response is need within hours to provide support to the community.



# District Khairpur Relief Activities

Research proves that the humanitarian crisis stemming from natural disasters has a gendered impact, often putting women at a further disadvantage. The flood survivors in Pakistan are struggling to acquire food, water, sanitation, and shelter, specifically women who are vulnerable to facing additional challenges at every step, owing to the persisting socio-economic and cultural norms. While dealing with the crisis, it is pertinent to ensure that the flood-surviving women in Pakistan are empowered through gender-specific relief operations and policies.



On dated 17th September 2022: SRSO District Khairpur Team installed one straw-made Echo Friendly Pit latrine initially as a pilot basis at Village Sohu Kanasra UC Sohu taluka Kotdij. Financially supported by Waheed Ali & Maria Relief Kitchen.



On dated 17th September 2022 SRSO district Khairpur team installed three mosquito nets shelters at taluka Nara 01. One shelter at Village Sain Dad Mallah.02. One shelter at Village Jumo Soomro, UC Pir Abdul Qadir Shah, 03. One Village Hayat Shar UC Dodo Aradin. Financially supported by Waheed Ali & Maria Relief Kitchen.



Umerkot: Aurat March chapter Karachi led by Ms. Sheema Karmani, Sanam Noor, Muneeza, and Rozeena came to VO Talib Al Mola and distributed 57 ration bags among the flood-affected people. Dry Ration and nonfood items details: 1. Flour 10 KG, 2. Oil Ghee 2 KG, 3. Dal Channa 3 KG, 4. Rice baspati 3 KG, 5. Sugar 2 KG, 6. Tea 500 grams, 7. Matchbox 5, 8. Milk every day 500 grams, 9. Soap 1, 10. Mosquito 1, 11. Model 1, 12. ORS 4 Sachet, 13. Sanatory pads, 14. Cerelac for lactating women for their babies, 15. Folic acid tablets, 16. Panadol tablets, 17. Baby care kit for pregnant women.



Larkano: On dated 15th Sep 2022 SRSO-Brooke Project Larkana Team Veterinary Officer Dr. Mohsin Ali Solangi with the support of Brooke Pakistan CAHO Dr. Rab Nawaz and SM Sajjad distributed 133 Feed/Fodder Bags in communities at village Mehrano UC Gud Larkana. In addition to this, SRSO-Brooke Veterinary Officer Larkana has treated 9 Equine Animals.



SRSO District Larkana team with the collaboration of UNFPA conducted an awareness session on hygiene and GBV prevention at village Imam Bux Mallah UC Moen Jo Daro Taluka Dokri District Larkana after that to maintain the dignity of women during emergencies 50 dignity Kits were provided to the adolescent girls and women.



Thatta: On September 15, 2022, SRSO Thatta Team organized a medical camp for rain-affected animals at Wadha stop camp at UC Buhara, Taluka Mir Pur Sakro, district Thatta. 430 animals vaccinated and treated by SRSO vet doctor



Thatta: September 15, 2022. SRSO team distributed 66 Non Food Items Kits (NFIs) with the support of ACF International and ECHO, village Khaliq Dino Thahim, UC- Palijani, and Wahid Dino Shoro UC-Bijora, district Thatta.





Noushero-Feroze: 80 Ration bags were distributed at village Malik union council salihpur taluka Moro with the funding of ABL Ghulam Sarwar kherro sb was also part of the distribution



Kashmore-Kandhkot: individual Donors in Engro Fertilizers Donated 100 Tarpaulins for Bahalkani SRSO District Kashmir Distributed 100 Tarpaulins at Village Shahzado Bahalkani. Bahalkani Community Paid thanks to Donor as there was stir need for Tarpaulins



OPPO A54  
2022/09/15 13:35



# FRESH COOKED FOOD

Floods in Pakistan have impacted an estimated 13.8 million people - of which some six million are displaced. 1.5 million people have lost their houses. SRSO along with different Donor Organizations and Philanthropists is responding to the emergency by distributing shelters, mosquito nets, plastic floor mats, water purification tabs, hygiene kits, kitchen sets, and other emergency supplies to families.



SRSO Staff Serving the Cooked Food to Villagers having no any road/Boats so they are crossing the huge water

On dated 17th September 2022 SRSO district Khairpur team provided cooked food to 180 families at Taluka Faiz Ganj supported by Waheed Ali & Maria Relief Kitchen.



Livestock & Fisheries  
Department, Government of Sindh

**Dr. Anisa and Shahid Latif charity**  
**Khairpur District Relief Work Partners**

# WORLD CENTRAL KITCHEN



World  
Central  
Kitchen

Öi  
RIZQ



## LIVE KITCHEN

RIZQ in collaboration with WCK Serving Fresh live food by establishing Dastarkhwan in different locations of Taluka Khairpur and Kot Diji. They are serving 1000-5000 Meals Per day in seven established sites.

## DRINKING WATER & FRUIT

Keeping the nutritional ingredients Rizq and WCK are also serving the fresh drinking water ( Mineral) and Fruit Apple and Banana to the affectees while serving the food.





# Appeal

## Rain Flood Relief Support for Affected Communities

Ghotki, Sukkur, Khairpur, Sanghar, Mirpurkhas, Umerkot, Badin, Thatta, Larkana, Kamber-Shadadkot, Jacobabad, Shikarpur, Kandhkot@Kashmore & Noushero-Feroze

**Monsoon Rain Emergency 2022**

Financial Support can be made with

Bank Name	Silk Bank Limited	United Bank Limited
Branch Address	Sukkur Branch	Minara Road, PO.Box NO.141, SUKKUR
Branch Code:	0010	0964
Account Title	Sindh Rural Support Organization	SRSO Flood Relief Account
Account NO:	002005809207	00300567
IBAN No:	PK39 SAUD 0000 0020 0580 9207	PK16 UNIL0112096400300567
Swift Code	SAUDPKKAXXX	UNILPKKA028



Provide assistance in the priority areas of dry ration, clean drinking water, non-food items, mosquito nets, fodder for livestock and medical supplies.

 [info@srso.org.pk](mailto:info@srso.org.pk)

 071-562718201

 /SRSO\_Official

 /SRSO.Official

**Sindh Rural Support Organization**

<https://srso.org.pk>